



ZERKLEINERUNGSTECHNIK

WOODGRINDER WL 10-20

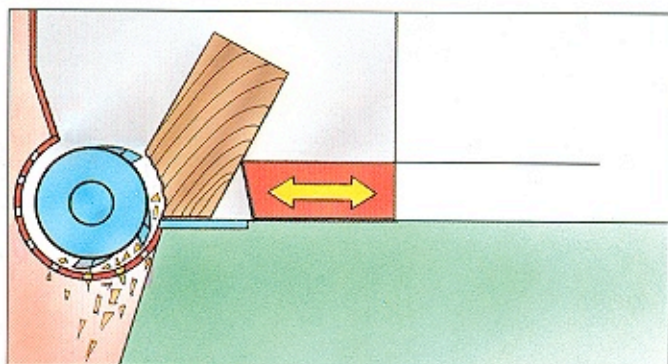


**The Quiet-Low RPM-
Low HP-WOODGRINDER**

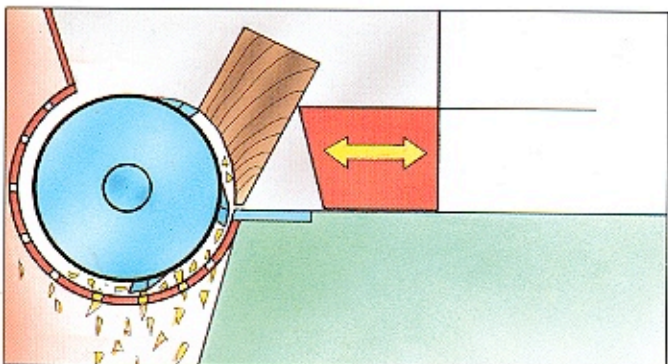
System:
Rotating cutterhead
with hydraulic pusher.



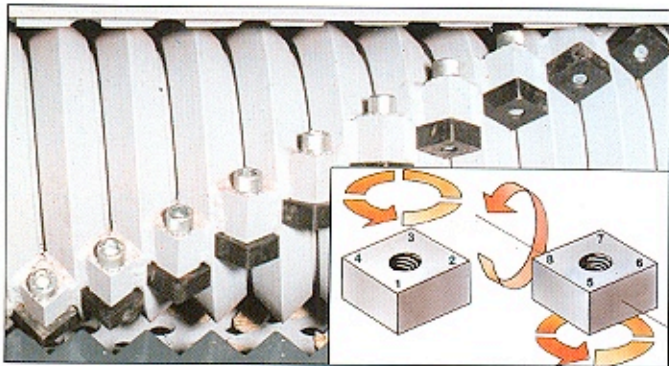
Larger Rotor – larger capacity



Rotor Diameter 252 on models WL 2-9, equals less capacity because of smaller grinding surface.



Rotor Diameter 368 on WL 7 S and 9 S, as well as series WL 10-20, larger rotor and larger screen area, entails larger capacity – especially with particle boards.



Profile Rotor with reversible hardened steel knives. Reversible 8 times, inexpensive, easy and fast to replace.



From 30 hp and up the units are equipped with hydraulic

The WL 10-20 is specially designed for furniture works

WL 10-20



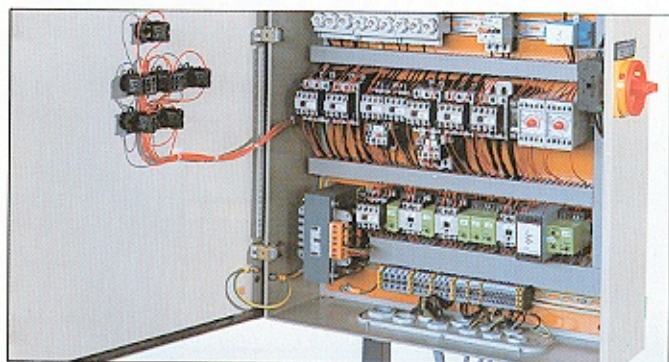
WEMA

igned for the large-scale enterprise of the woodworking-industry





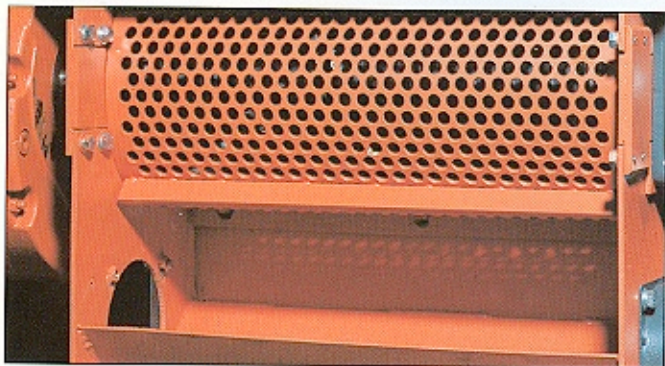
Proven technology guarantees success



Prewired Controlbox with 16ft long cable for wall mounting ensures easy installation. Logically sectionalized controlbox – easy to adjust.



Synthetic gasket fills any void between Ram and hopper, thus avoids any material jamming.



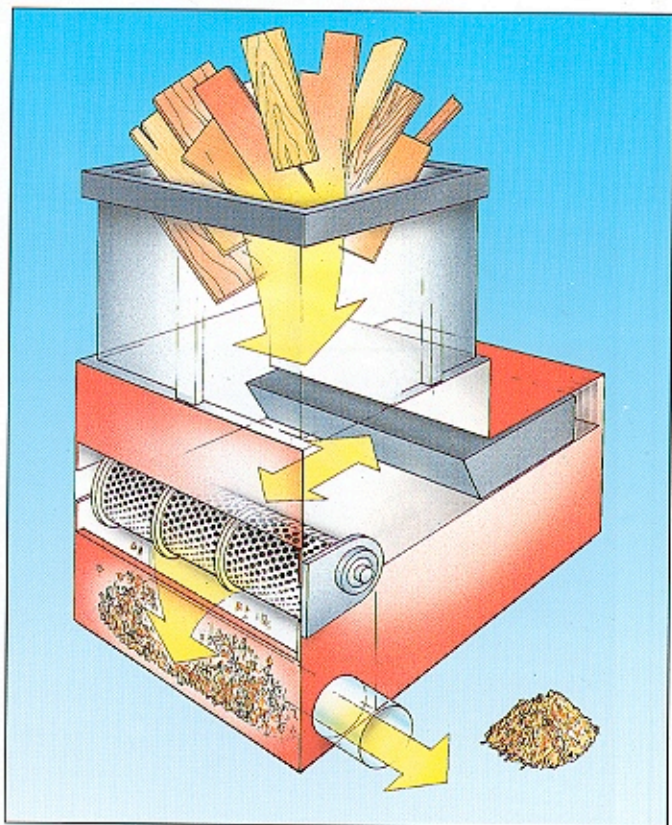
The screen is located underneath the rotor. It is curved so that the maximum amount of chips will be allowed through. Chip size is determined by screenhole diameter.



The hydraulic cylinder for the ram is mounted centrally in a



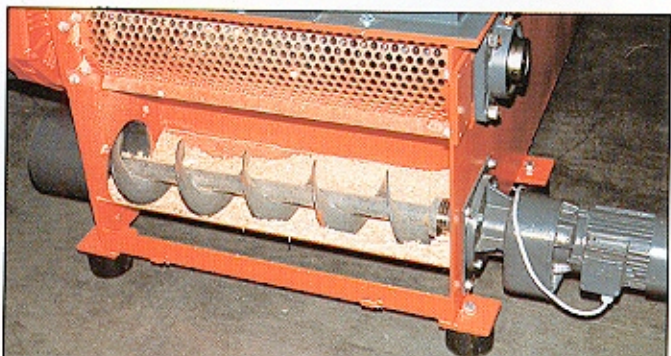
System: Rotating cutter head with hydraulic pusher



It grinds any kind of woodscrap: Pallets, Laminated panels, Solid wood, etc. and turns scrap into valuable shavings that can be used for burning, stables, kennels, chickenfarms, etc. Fill the bin automatically, turn the machine on- and leave the rest to Weima.

A hydraulically controlled pusher ram pushes the scrap towards the low RPM-Rotor. The travel of the pusher ram is controlled by the amperage draw of the main motor. The special reversible knives ensures a very consistent chip size. Nails and similar items cause no problems for this Grinder.

Optional Accessories: If you do not have adequate dust collection, a wormscrew can be attached. Beltdriven gear-

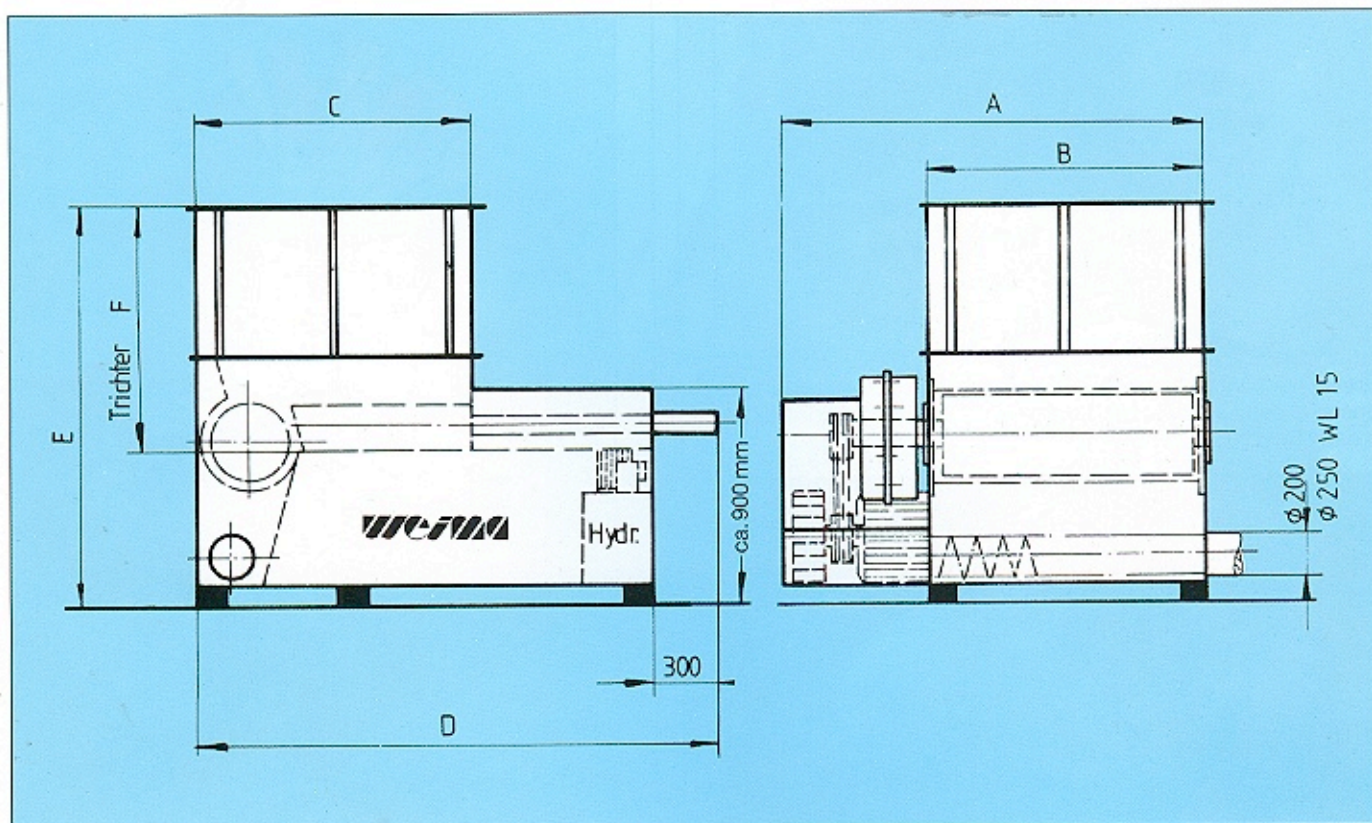


box mounted on a "Spring-loaded" suspension system to



HIGH CAPACITY – Quick Pay Back

Technical data of Series WL 10-20



Measurement:

| Model | WL 10 | WL 12 | WL 14 | WL 15 | WL 18 | WL 20 |
|---------------|----------------------------------|----------------------------------|----------------------------------|----------------------------------|----------------------------------|-----------------------------------|
| Measurement A | 67" | 74 ⁷ / ₈ " | 86 ⁵ / ₈ " | 86 ⁵ / ₈ " | 98 ³ / ₈ " | 106 ¹ / ₄ " |
| Measurement B | 39 ¹ / ₃ " | 47 ¹ / ₄ " | 47 ¹ / ₄ " | 59" | 70 ⁷ / ₈ " | 78 ³ / ₄ " |
| Measurement C | 47 ¹ / ₄ " | 47 ¹ / ₄ " | 47 ¹ / ₄ " | 59" | 70 ⁷ / ₈ " | 78 ³ / ₄ " |
| Measurement D | 98" | 98" | 108" | 118" | 130" | 138" |
| Measurement E | 68 ⁷ / ₈ " | 68 ⁷ / ₈ " | 68 ⁷ / ₈ " | 68 ⁷ / ₈ " | 68 ⁷ / ₈ " | 68 ⁷ / ₈ " |
| Measurement F | 41 ³ / ₄ " | 41 ³ / ₄ " | 41 ³ / ₄ " | 41 ³ / ₄ " | 41 ³ / ₄ " | 41 ³ / ₄ " |

Technical Data:

| Model | WL 10 | WL 12 | WL 14 | WL 15 | WL 18 | WL 20 |
|------------------|--|---|--|----------------------------------|---|---|
| Bin opening | 39 ³ / ₈ " x 47 ¹ / ₄ " | 47 ¹ / ₄ " x 47 ¹ / ₄ " | 59" x 47 ¹ / ₄ " | 59" x 59" | 70 ³ / ₄ " x 70 ³ / ₄ " | 78 ³ / ₄ " x 78 ³ / ₄ " |
| Bin capacity | 1,96 yd ³ | 2,6 yd ³ | 3,1 yd ³ | 3,7 yd ³ | 5,2 yd ³ | 7,1 yd ³ |
| Capacity | The units will empty 2-4 bins p/hour depending on size & type of material and screen hole diameter | | | | | |
| Rotor-Diam. | 14 ¹ / ₂ " | 14 ¹ / ₂ " | 14 ¹ / ₂ " | 14 ¹ / ₂ " | 14 ¹ / ₂ " | 14 ¹ / ₂ " |
| R.P.M. | 60 - 100 | 60 - 100 | 60 - 100 | 60 - 100 | 60 - 100 | 60 - 100 |
| H.P. | 30/40/50 | 40/50/60 | 40/50/60 | 50/60 | 50/60/74 | 60/74 |
| Knives | 24 | 29 | 37 | 37 | 45 | 52 |
| Screen hole size | 10/20 | 10/20 | 10/20 | 10/20 | 10/20 | 10/20 |
| Dust outlet | 7 ⁷ / ₈ " | 7 ⁷ / ₈ " | 9 ³ / ₄ " | 9 ³ / ₄ " | 9 ³ / ₄ " | 9 ³ / ₄ " |
| Air-speed: | 28 m/sec | 28 m/sec | 28 m/sec | 28 m/sec | 28 m/sec | 28 m/sec |
| Weight *) | 6 600 lbs | 7 260 lbs | 8 360 lbs | 9 900 lbs | 11 440 lbs | 13 200 lbs |

*) Note: The unique construction ensures stable performance.

Specifications are approximate and subject to change.



CREATES SPACE!

Just load your scrap in the hopper!

Our new technology saves you space and labor in material handling. Whether you heat with your chips, resell them or just want to lower your waste removal cost – you must grind.
will grind for less cost in electricity, space and tooling, than anyone else.

