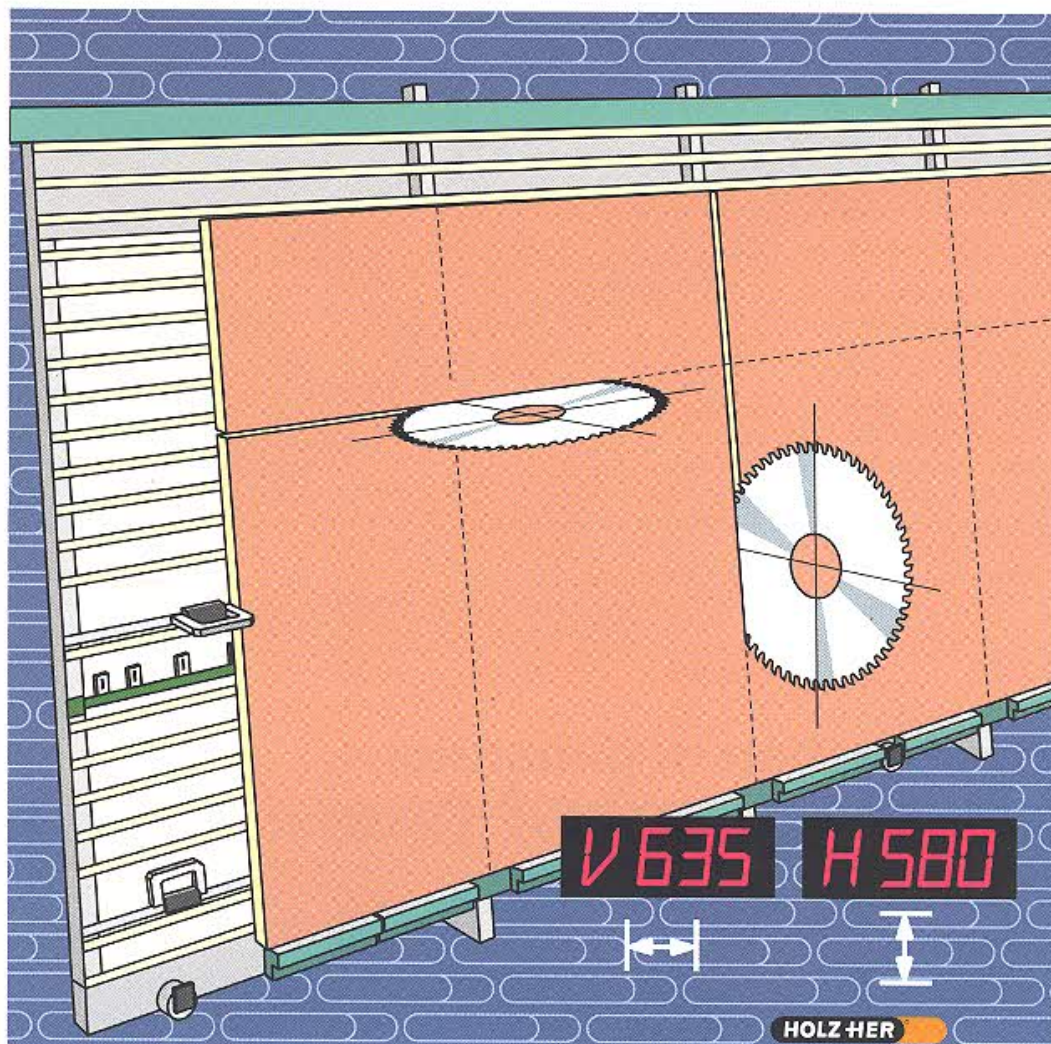


# **HOLZ-HER<sup>®</sup>**

special machines



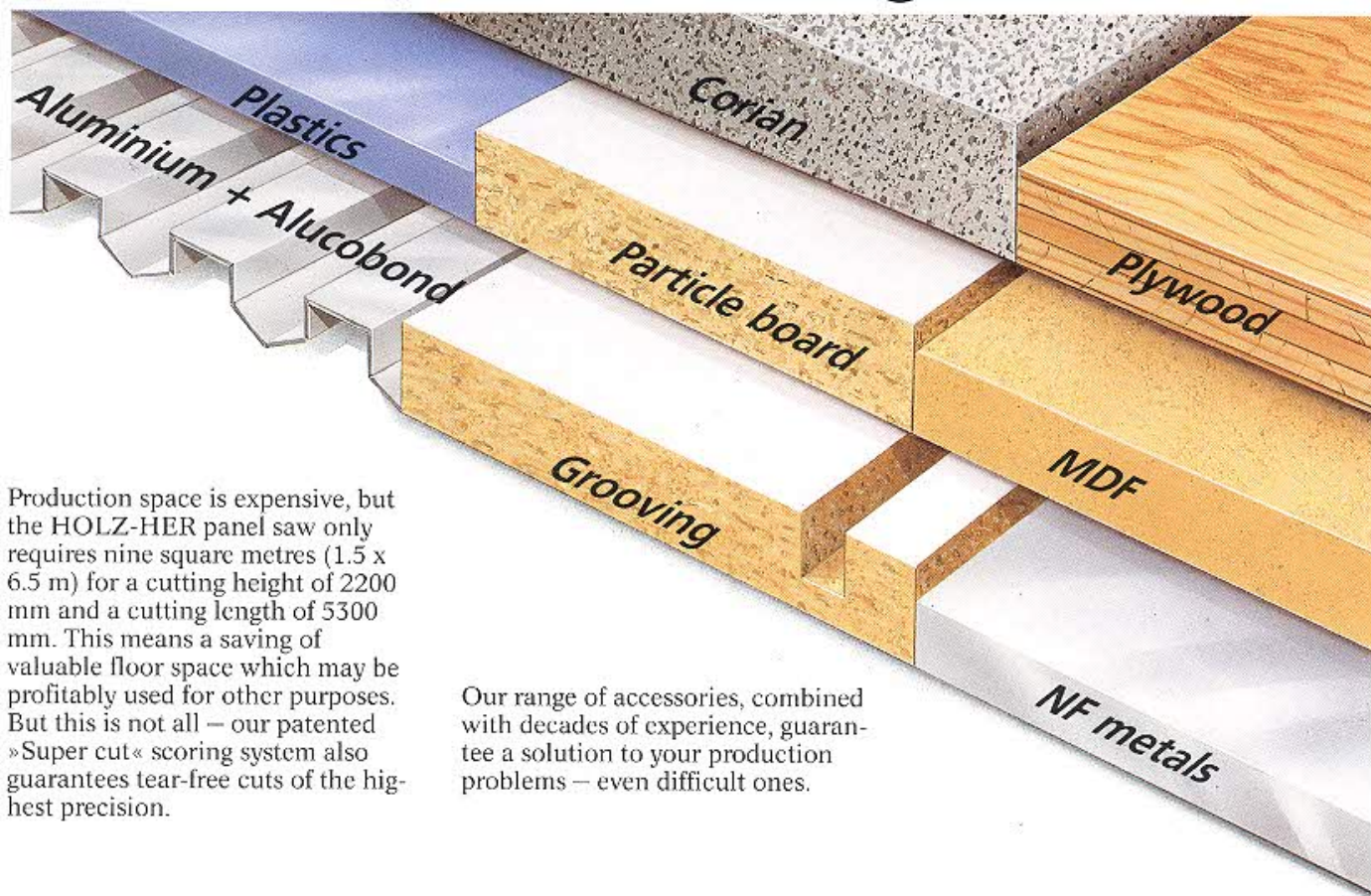
## Panel Saws

Models: 1265, 1270 and 1215, 1220

**Super  
cut**



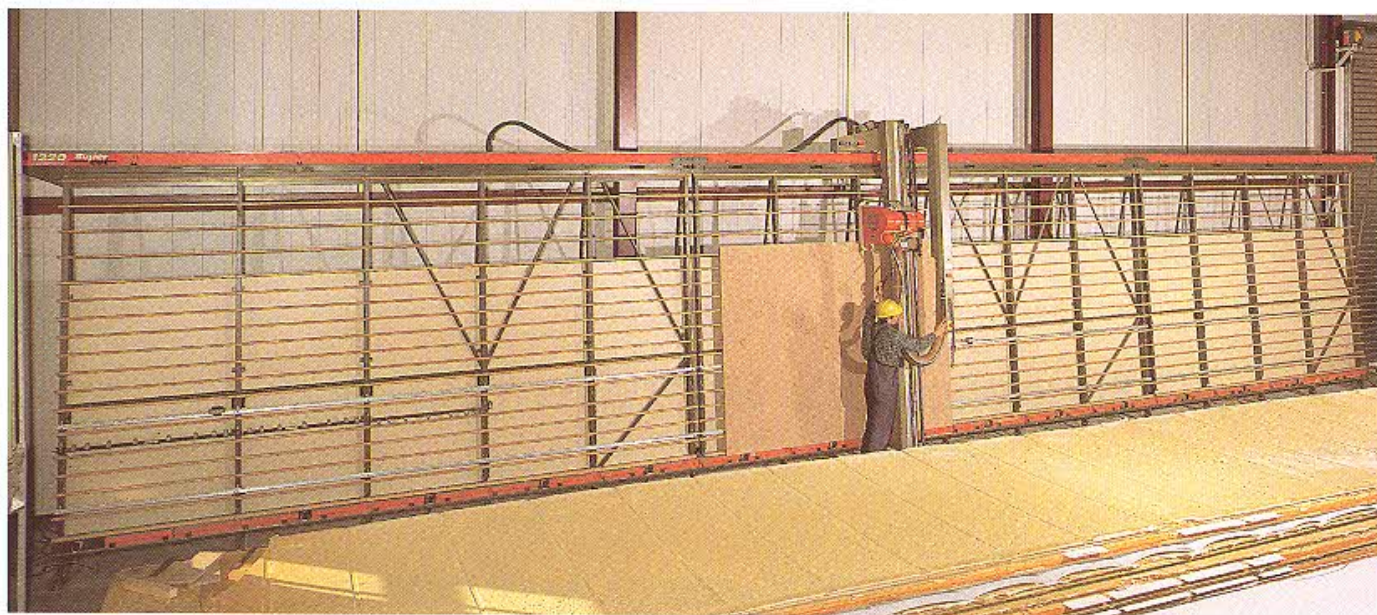
# The HOLZ-HER solution for universal panel cutting



Production space is expensive, but the HOLZ-HER panel saw only requires nine square metres (1.5 x 6.5 m) for a cutting height of 2200 mm and a cutting length of 5300 mm. This means a saving of valuable floor space which may be profitably used for other purposes. But this is not all – our patented »Super cut« scoring system also guarantees tear-free cuts of the highest precision.

Our range of accessories, combined with decades of experience, guarantee a solution to your production problems – even difficult ones.

## In any combination of dimensions, ..



By the way, we can also supply custom-tailored machines, exactly suited to your needs and space availability.

Give us a call or send for our comprehensive literature. Your local HOLZ-HER dealer will be pleased to invite you to a demonstration.

Exceptional requirements call for exceptional panel saws – from HOLZ-HER...  
Cutting length 15.3 m.



# ...helped by bright ideas...

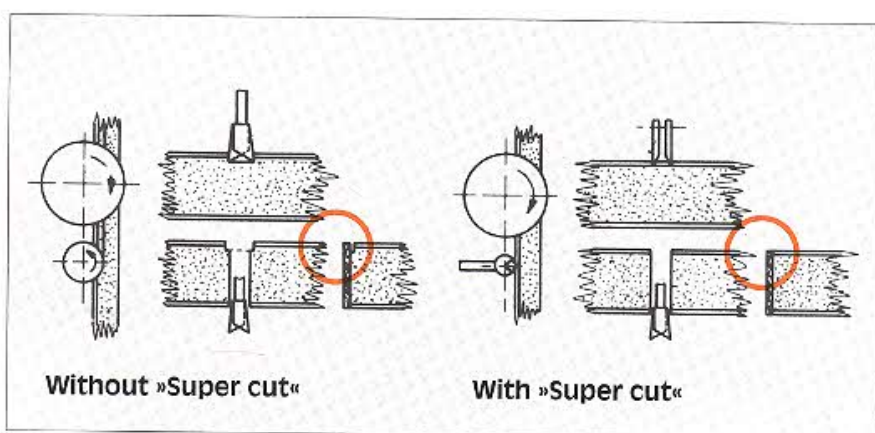
## »Super cut« – the unrivalled scoring system

»Super cut« is a system patented by HOLZ-HER, which cuts coated panels on vertical panel saws without tearing, exactly to size and ready to edgeband.

Two TC-tipped knives score the panel surface on both sides of the saw blade, preventing the hard, brittle or fibrous outer layer from tearing during the cutting process.

Depending on workpiece conditions, the four-sided indexing cutters ensure multiple life time per cutting edge with only one adjustment.

When you want  
to saw – but not tear



»Super cut« plus points in brief:

- ▶ Easy precision setting of the TC-tipped scoring blades
- ▶ Only the surface is scored
- ▶ No cutting offset
- ▶ Resulting in better edge bonding
- ▶ Long useful life of blades
- ▶ Operator-friendly four-sided TC-tipped indexing blades

## ... and modern technology ...



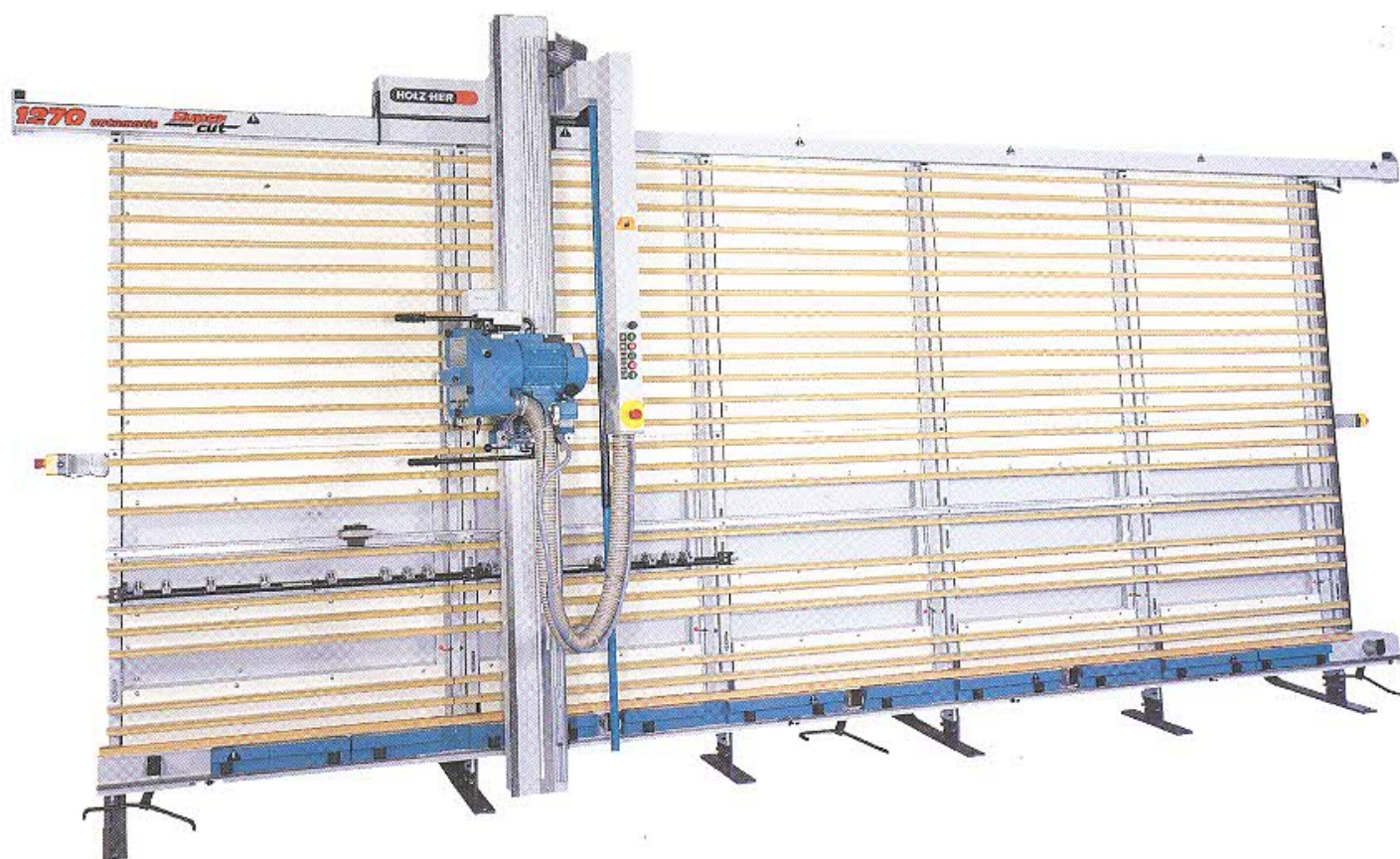
## ... for genuine progress

# HOLZ-HER®

## Always one step ahead!



# Panel saws 1270 automatic and 1265



	<b>1270 automatic</b>
Cutting depth up to	45/50 mm*
Saw unit	Tilting 90 deg.
Motor power	3 kW (S6 – 40%) 4 HP
Saw blade speed	5450 rev/min at 50 Hz 6640 rev/min at 60 Hz
Saw blade dia.	220 mm
Feed: Motor power	0.35/0.55 kW
Speeds	11/22 m/min
Working dimensions (mm):	
Max. pass height	1660, 1940, 2080 or 2215
Max. edging height	1590, 1870, 2010 or 2145
Max. vert. scoring height	1590, 1870, 2010 or 2145
Max. workpiece length	3300, 4300 or 5300

	<b>1265</b>
Cutting depth up to	45/50 mm*
Saw unit	Tilting 90 deg.
Motor power	3 kW (S6 – 40%) 4 HP
Saw blade speed	5450 rev/min at 50 Hz 6640 rev/min at 60 Hz
Saw blade dia.	220 mm

Working dimensions (mm):	
Max. pass height	1660, 1940, 2080 or 2215
Max. edging height	1590, 1870, 2010 or 2145
Max. vert. scoring height	1590, 1870, 2010 or 2145
Max. workpiece length	3300, 4300 or 5300

## Standard equipment Model 1270 automatic:

Hinged support rails in 1st and 2nd frame sections, with re-trimmable individual supports, program rail with 3 cams, automatic moving grid, length stop extending over full frame length, integrated dust extraction, 1 high-quality 42-tooth TC-tipped saw blade, hollow/ridge teeth, 220 mm dia., tool kit, operating instructions and spare parts list.

## Standard equipment Model 1265:

Hinged support rails in 1st and 2nd frame sections, with re-trimmable individual supports, program rail with 3 cams, automatic moving grid, length stop extending over full frame length, integrated dust extraction, 1 high-quality 42-tooth TC-tipped saw blade, hollow/ridge teeth, 220 mm dia., tool kit, operating instructions and spare parts list.

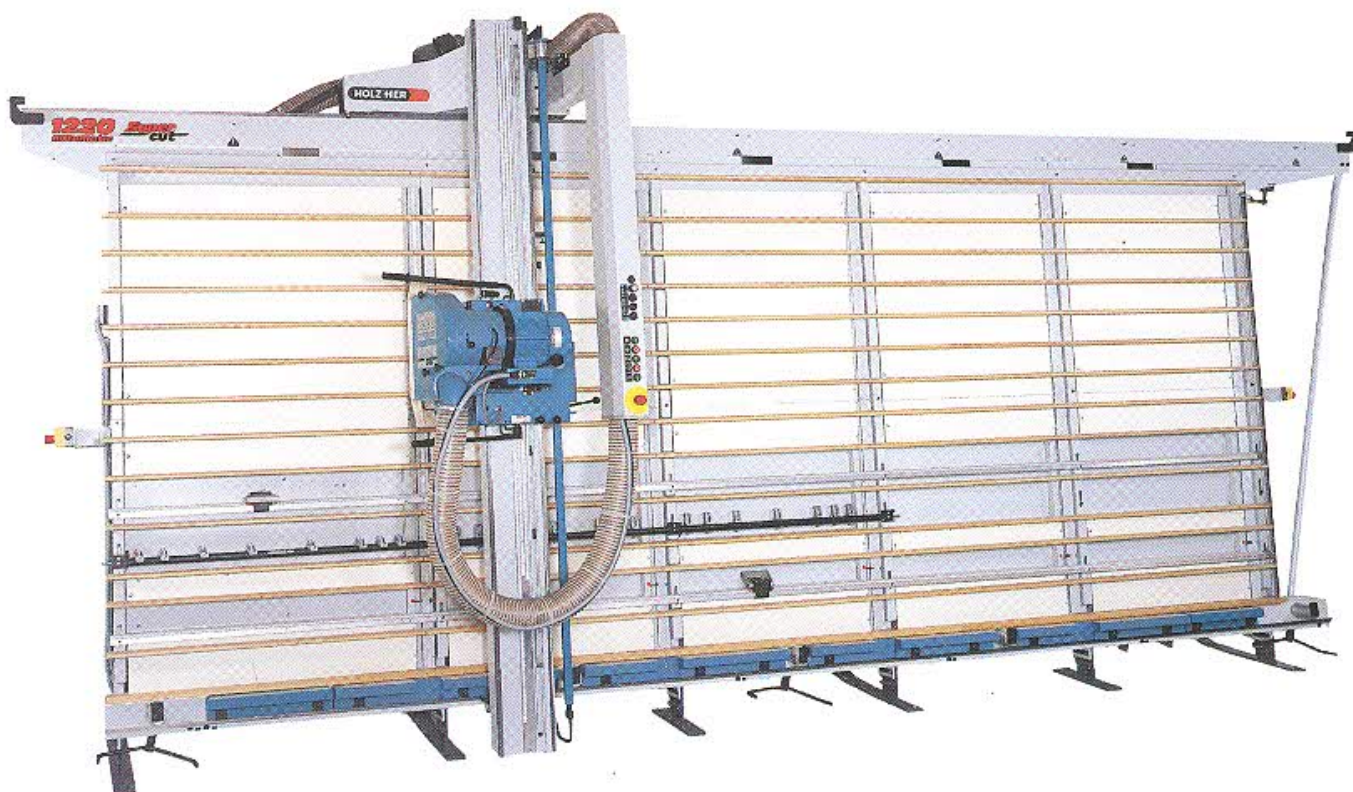
At additional cost, all machines are available with BG-approved TRK dust extraction.

\* The cutting depths stated are workpiece dependent. The larger value only applies when the »Super cut« scoring unit is not in use.



# Heavy-duty panel saws

## 1220 automatic and 1215



	<b>1220 automatic</b>	<b>1215</b>
Cutting depth up to (depending on material)	70/80 mm*	70/80 mm*
Saw unit		
Motor power	Tilting 90 deg. 4.6 kW (S6 – 40%) 6.3 HP	Tilting 90 deg. 4.6 kW (S6 – 40%) 6.3 HP
Saw blade speed	4420 rev/min approx.	4420 rev/min approx.
Saw blade dia.	300 mm	300 mm
Feed: Motor power	0.35/0.55 kW	
Speeds	12 and 24 m/min	
Working dimensions (mm):		
Max. pass height	2050, 2200 or 2800	2050, 2200 or 2800
Max. edging height	1950, 2100 or 2700	1950, 2100 or 2700
Max. vert. scoring height	1950, 2100 or 2700	1950, 2100 or 2700
Max. workpiece length	4300 or 5300	4300 or 5300

### Standard equipment Model 1220 automatic:

Hinged support rails in 1st, 2nd and 3rd frame sections, 2 length stops extending over frame length, strip stop up to 670 mm, program rail with 3 cams, 1 high-quality 60-tooth TC-tipped saw blade, hollow/ridge teeth, 300 mm dia., tool kit, operating instructions and spare parts list.

### Standard equipment Model 1215:

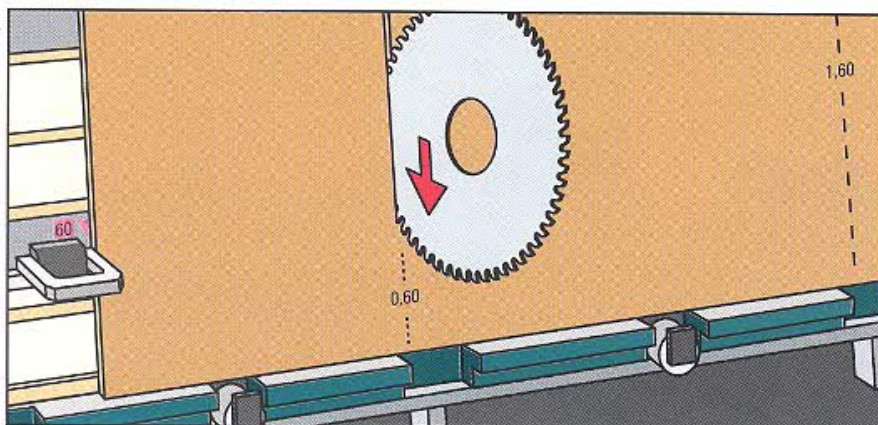
Hinged support rails in 1st, 2nd and 3rd frame sections, 2 length stops extending over frame length, strip stop up to 670 mm, program rail with 3 cams, 1 high-quality 60-tooth TC-tipped saw blade, hollow/ridge teeth, 300 mm dia., tool kit, operating instructions and spare parts list.

At additional cost, all machines are available with BG-approved TRK dust extraction.

\* The cutting depths stated are workpiece dependent. The larger value only applies when the »Super cut« scoring unit is not in use.



# Cutting to size

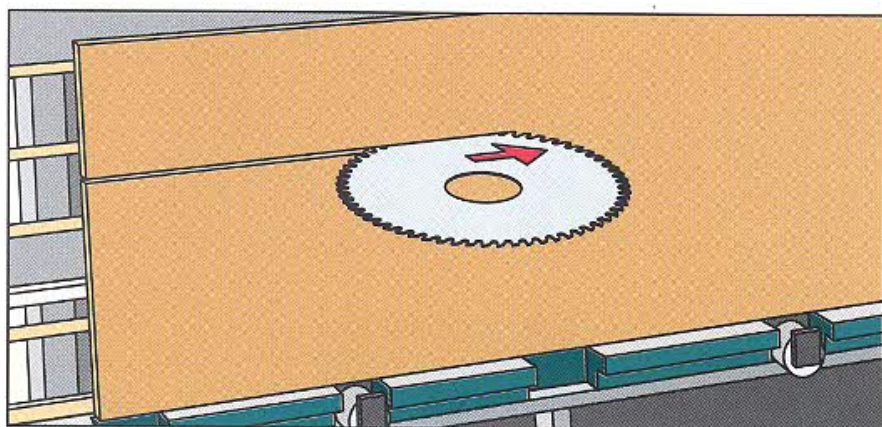
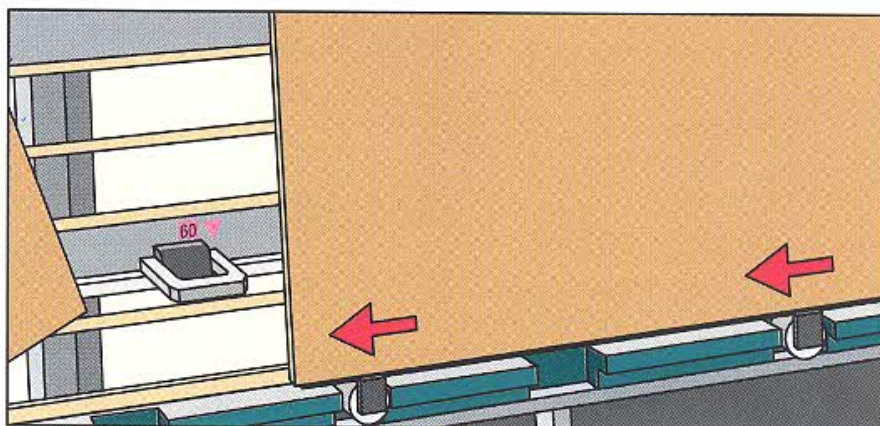


## The vertical cut

The desired dimension to be cut vertically is set at the length stop, e.g. 60 cm. Depending on whether the saw unit is engaged in the 1st, 2nd or even 3rd cutting position, a respective length of 0.6 m, 1.6 m, 2.6 m or 3.6 m results.

## Intermediate transport

When the piece has been cut off, it is set down on one side. The transport rollers are then raised by means of foot-operated levers, and the rollers make it easy to pull the panel again up to the set stop. Now the rollers are lowered and the next vertical cut can be made, manually on models 1265/1215 or automatically on models 1270/1220.

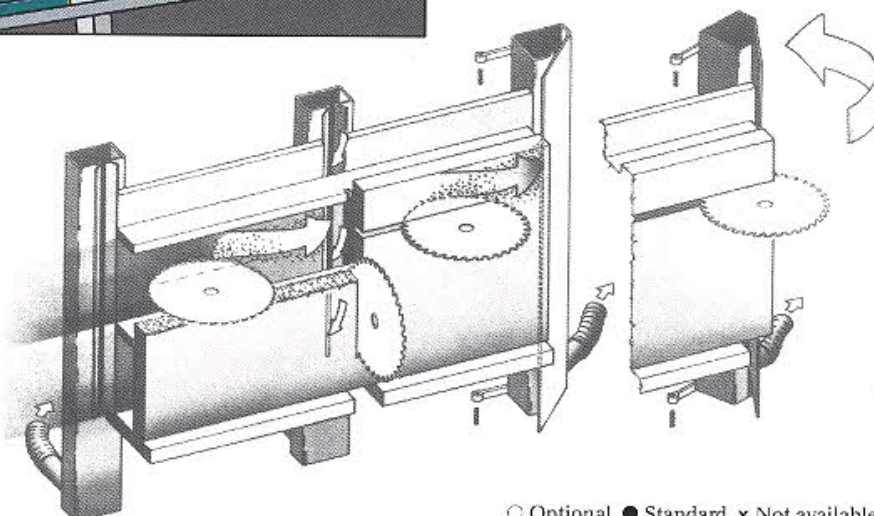


## The horizontal cut

Once the saw unit has been tilted and one edging cut made, the next dimension is set downwards. This may be simplified by using the rip gauge for repeat cuts, or the digital indicator for changing sizes, which automatically corrects for the saw blade kerf. Further cuts may now be made either manually (1265/1215) or automatically (1270/1220).

## Dust extraction

All machines equipped with TRK extractor have extraction ducts behind each cutting position. For horizontal cuts, the panel is set on the right-hand side against a hinged extraction duct, and a channel-type system is created between the support battens. As with all standard models, the TRK version also has an extractor connection directly at the saw unit.



○ Optional, ● Standard, x Not available

1220	1215	1270	1265
○	○	○	○



# Details and accessories



## Fixed locking positions

to insure that vertical cuts are only made at designated points. Locking takes place simultaneously at top and bottom, to ensure a vertical precision cut even with tall panels.

1220	1215	1270	1265
●	●	●	●



## Automatic moving grid

- 1 With forced deflection feature, to prevent damage to the fence battens during horizontal cuts.
- 2 Precision guide rail – wide, stable and surface ground, to ensure precision over the entire length.

1220	1215	1270	1265
●	●	●	○



## Moving grid – 1265

Prevents damage to backing battens during horizontal cuts. The support grid automatically moves downwards.

1220	1215	1270	1265
x	x	x	●



## Sandwich sound absorption

- our „quietest“ claim.

You will have to listen carefully if you want to hear the sound of the motor or the saw blade. Our sound absorption system complies with Federal Trade Association „HOLZ“ Regulations – at no extra charge to you.

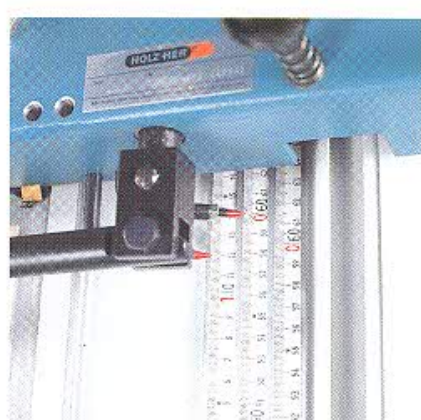
1220	1215	1270	1265
●	●	●	●



## Chain guide

Smooth action provides effortless movement of saw carriage and saw head during both horizontal and vertical feed.

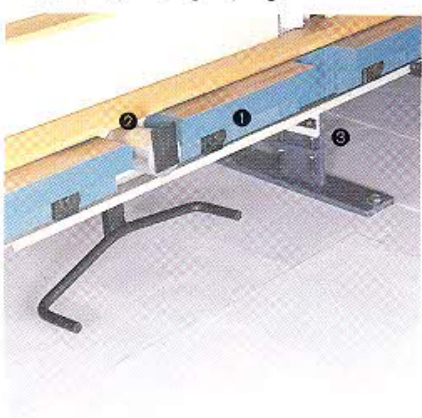
1220	1215	1270	1265
●	●	●	●



## Dimensional indicators

3 dimensional scales for horizontal cuts, depending on whether you have to read the values on the composite-wood support from above or below the unit, or whether values are changed from the hinged support rail.

1220	1215	1270	1265
●	●	●	●



## Workpiece support

Combined with transport rollers.

- 1 Stable composite-wood supports for repeated re-trimming with only one setting for highest precision of cut and angle.
- 2 The rollers are raised for moving the panels, and lowered for cutting.

## Frame feet

- 3 Adjustable frame feet to prevent uneven floor conditions from impairing the cutting precision.

1220	1215	1270	1265
●	●	●	●



## Hinged support rails

Swivelling and locking, and individually divided for each cutting section, to prevent parts on the saw from being knocked off when the rails are lowered.

Convenient cutting even of small panels at normal working height.

1220	1215	1270	1265
●	●	●	●

○ Optional, ● Standard, x Not available



# Details and accessories



## »Super Cut«

The unique scoring system for tear-free cuts of coated panels.

1220	1215	1270	1265
○	○	○	○



## Rip gauge

Particularly suitable for repeated horizontal cuts. The desired dimension, plus saw blade kerf, is set once and identical cuts are then made from the reference edge down the panel.

1220	1215	1270	1265
●	●	○	○



## Length stop – 1265/1270

An additional dimensional stop in the lower part of the frame, to enable long and heavy strips to be cut on composite-wood supports.

1220	1215	1270	1265
●	●	○	○



## Carriage with extended stop plate

For handling narrow workpieces on the hinged rail.

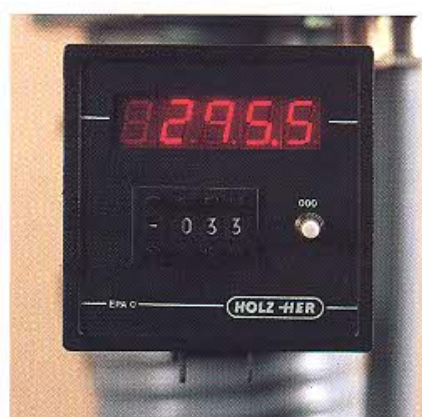
1220	1215	1270	1265
○	○	○	○



## Dimensional stop with lever clamping

For use as a programming stop. This stop system allows the positioning of several flip stops on the rail.

1220	1215	1270	1265
○	○	○	○



## Digital read-out

- For vertical cuts with 1/10 read-out precision.
- A great help for horizontal cuts. The saw blade kerf is automatically compensated for.

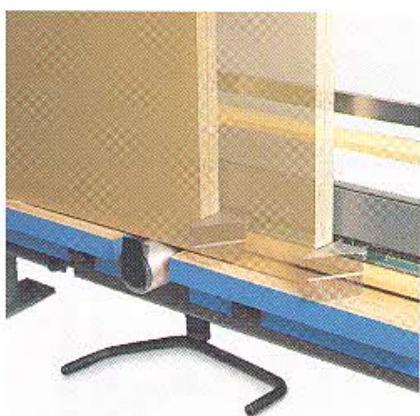
1220	1215	1270	1265
○	○	○	○



## Electric shift unit

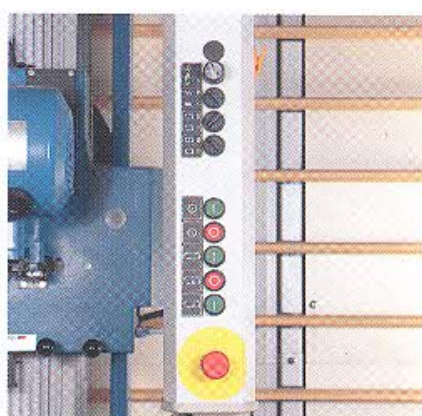
For maximum operating ease.

This control unit allows you to move panels easily and quickly. Only one man is now needed for the entire cutting operation.



Move your panels quickly and safely to the stop. You are left to concentrate on the cutting operation alone, without having to leave your control panel work station.

1220	1215	1270	1265
○	○	○	○



## Automatic models Operating functions

Saw unit On – Off  
Sawing cycle Start – Stop  
Interrupt cycle (retract)  
Return to start position

1220	1215	1270	1265
●	x	●	x

○ Optional, ● Standard, x Not available



# Details and accessories



## Multi-function lever

Lever for locking at vertical locking points or for horizontal cuts.

1220	1215	1270	1265
●	●	x	x



## Short hinged support rail, complete

Allows the machine to be equipped with additional hinged support rails when required.

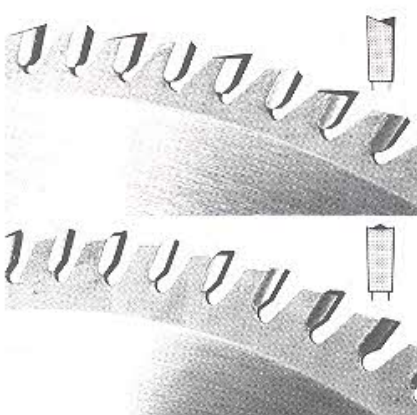
1220	1215	1270	1265
○	○	○	○



## Replacement »Super Cut« scoring blades

TC-tipped indexing blades with 4 cutting edges.

1220	1215	1270	1265
○	○	○	○



## Selection of saw blades

We can supply you with saw blades for many different applications, to supplement the TC-tipped blade supplied. All tested and continuously quality-controlled.

1220	1215	1270	1265
●	●	●	●
○	○	○	○

(Basic machine)

## Infinitely variable regulation of speed

Often an indispensable accessory when NF metals or plastics, such as PVC, have to be cut under optimum processing conditions. Regulation through separate frequency converter.

1220	1215	1270	1265
●	●	x	x

## Infinitely variable regulation of feed speed \*

Infinitely variable regulation of feed speed through separate frequency converter. Often an indispensable accessory when NF metals or plastics, such as PVC, have to be cut under optimum processing conditions.

1220	1215	1270	1265
●	x	x	x

## Grooving attachment

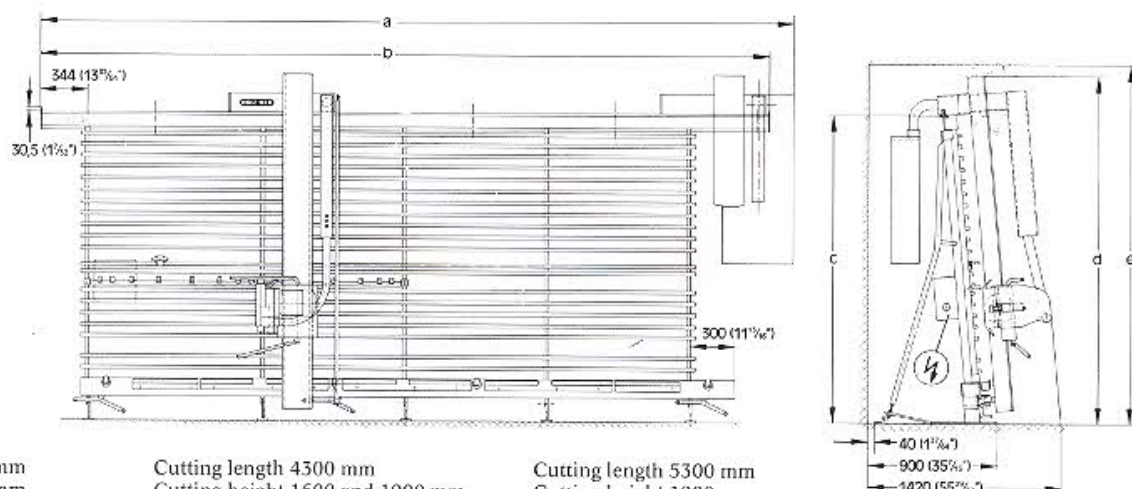
This extends the usefulness of your panel saw, e.g. for grooving side or back panels.

1220	1215	1270	1265
x	x	○	○

○ Option,  
● Standard,  
x not available  
\*With these accessories not available as TRK approved version.



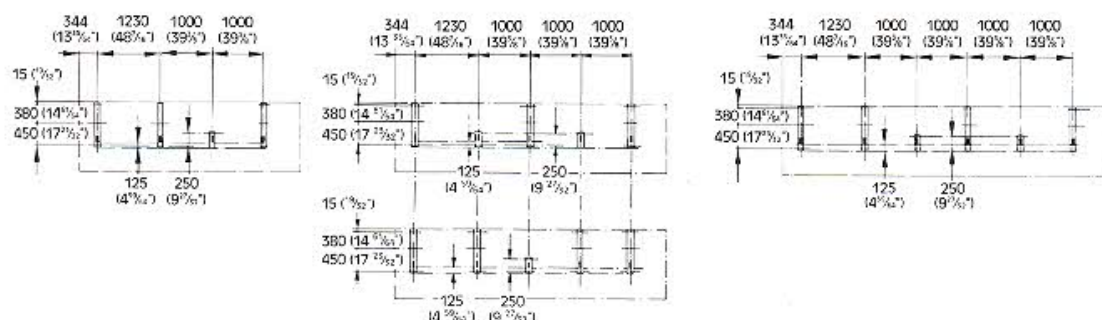
# Machine dimensions – Models 1265/1270 automatic



Cutting length 3300 mm  
Cutting height 1600 mm  
and 1900 mm

Cutting length 4300 mm  
Cutting height 1600 and 1900 mm,  
2200 mm (bottom)

Cutting length 5300 mm  
Cutting height 1900  
and 2200 mm



Dimensions in mm	1265/1270	1265/1270	1265/1270	1265/1270
Cut height	1645 mm*	1925 mm*	2070 mm**	2200 mm**
a = Cutting length +	1015 mm			
b = Cutting length +	850 mm			
c = Frame height	1930/1930	2210/2210	2350/2350	2485/2485
d = Machine height	2220/2335	2500/2615	2640/2755	2775/2890
e = Headroom	2260/2365	2540/2645	2680/2785	2815/2920
Edging height	1590/1590	1870/1870	2010/2010	2145/2145
Pass height	1660/1660	1940/1940	2080/2080	2215/2215

\* Frame one piece / \*\* Frame divided in middle

## Standard equipment Model 1265:

Hinged support rails in 1st and 2nd frame sections, with re-trimmable individual supports, program rail with 3 cams, automatic moving grid, length stop extending over full frame length, integrated dust extraction, 1 high-quality 42-tooth TC-tipped saw blade, hollow/convex teeth, 220 mm dia., tool kit, operating instructions and spare parts list.

## Standard equipment Model 1270 automatic:

Hinged support rails in 1st and 2nd frame sections, with re-trimmable individual supports, program rail with 3 cams, automatic moving grid, length stop extending over full frame length, integrated dust extraction, 1 high-quality 42-tooth TC-tipped saw blade, hollow/convex teeth, 220 mm dia., tool kit, operating instructions and spare parts list.

## Specification

The panel sizes stated assume that the saw blade plunges and retracts during the cut. If this is not desired, the panel dimensions reduce by approx. 300 mm in each case.

### Emission values

The noise level determined in accordance with EN 23 746, with CEN TC 142 supplement, in connection with ISO 7960 is for:

No-load	87 dB (A)
Work noise	92 dB (A)

### Workplace-specific emission value

The noise level determined in accordance with EN 31 202, with CEN TC 142 supplement, in connection with ISO 7960 is for:

No-load	73 dB (A)
Work noise	79 dB (A)

### Working dimensions (mm):

Max. pass height  
Max. edging height  
Max. vert. scoring height  
Max. workpiece length  
Cutting depth up to  
Saw unit  
Motor power  
Compressed air  
Extractor connection  
Air requirement  
Air speed  
Saw blade speed

Saw blade dia.  
Feed: Motor power  
Speeds  
Power requirement  
Machine dimensions:  
Floor space

### Height

Machine weight:  
(Largest version)  
Gross weight:  
(Largest version)

### 1265

1660, 1940, 2080 or 2215  
1590, 1870, 2010 or 2145  
1590, 1870, 2010 or 2145  
3300, 4300 or 5300  
45/50 mm  
Tilting 90 deg.  
3 kW (S6 – 40%) 4 HP  
160 mm dia.  
2000 m<sup>3</sup>/h  
20 m/s  
5450 rev/min at 50 Hz  
6640 rev/min at 60 Hz  
220 mm

3 kW, 3-phase

4315, 5315 or  
6315 x 1420 mm  
2220, 2500, 2640  
or 2775 mm

760 kg approx.

990 kg approx.

### 1270 automatic

1660, 1940, 2080 or 2215  
1590, 1870, 2010 or 2145  
1590, 1870, 2010 or 2145  
3300, 4300 or 5300  
45/50 mm  
Tilting 90 deg.  
3 kW (S6 – 40%) 4 HP  
6 bar  
160 mm dia.  
2000 m<sup>3</sup>/h  
20 m/s  
5450 rev/min at 50 Hz  
6640 rev/min at 60 Hz  
220 mm  
0.35/0.55 kW  
11/22 m/min  
3.6 kW 3-phase

4315, 5315 or  
6315 x 1420 mm  
2335, 2615, 2755  
or 2890 mm

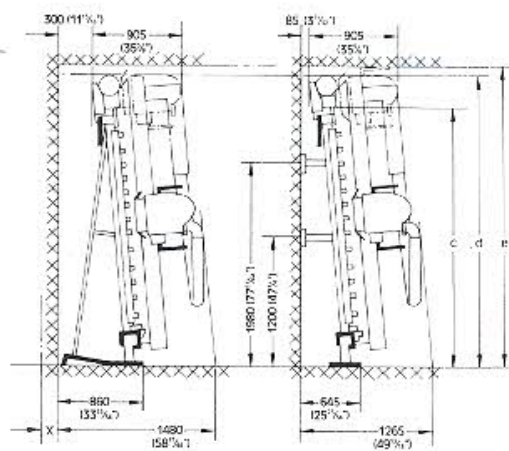
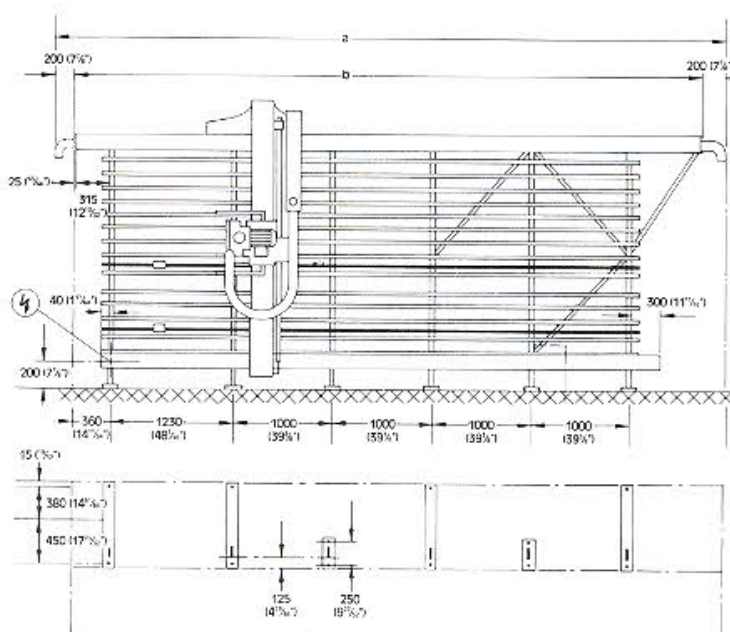
850 kg approx.

1050 kg approx.

Models 1265/1270 automatic are available with or without TRK extractor system (in accordance with latest federal regulations).



# Machine dimensions—Models 1215/1220 automatic



Floor mounted  
(free standing)

Dimensions in mm	1215/1220 Cut length 4300 mm	1215/1220 Cut length 5300 mm	1215/1220 Cut height 2200 mm **
a	5755	6755	
b	5355	6355	
c = Frame height			2480 + 45
d = Machine height			2845 + 45
e = Headroom			2895
Edging height			2100
Pass height			2200

\*\* Frame is divided in middle

## Standard equipment Models 1215/1220 automatic:

Hinged support rails in 1st, 2nd and 3rd frame sections, 2 length stops extending over frame length, strip stop up to 670 mm, program rail with 3 cams, 1 high-quality 60-tooth TC-tipped saw blade, hollow/convex teeth, 300 mm dia., tool kit, operating instructions and spare parts list.

This specification is based on approximate values. We reserve the right to modify any of the data or illustrations, as our HOLZ-HER products are subject to continuous improvement and updating. The machines illustrated may also contain special equipment which is not included in the standard supply package. Please ask your HOLZ-HER distributor to specify the range of equipment included in your order. We reserve the right to modify both the design and the equipment.

## Specification

The panel sizes stated assume that the saw blade plunges and retracts during the cut. If this is not desired, the panel dimensions reduce by approx. 400 mm in each case.

### Emission values

The noise level determined in accordance with EN 23 746, with CEN TC 142 supplement, in connection with ISO 7960 is for:

No-load	96 dB (A)
Work noise	98 dB (A)

### Workplace-specific emission value

The noise level determined in accordance with EN 31 202, with CEN TC 142 supplement, in connection with ISO 7960 is for:

No-load	80 dB (A)
Work noise	83 dB (A)

### Working dimensions (mm):

Max. pass height  
Max. edging height  
Max. vert. scoring height  
Max. workpiece length  
Cutting depth up to  
(depending on material)  
Saw unit  
Motor power  
Compressed air  
Extractor connection  
Air requirement  
Air speed  
Saw blade speed  
Saw blade dia.  
Feed: Motor power  
Speeds

### Power requirement

Machine dimensions:  
Floor space  
Free standing  
Wall mounted  
Height  
Machine weight  
Packing  
(2200 x 5300 mm machine)

Gross weight:  
Packing for shipping  
(2200 x 5300 mm machine)

Gross weight, for shipment by sea

### 1215

2050, 2200 or 2800  
1950, 2100 or 2700  
1950, 2100 or 2700  
4300 or 5300  
70/80 mm  
Tilting 90 deg.  
4.6 kW (S6 – 40%) 6.3 HP  
160 mm dia.  
2000 m<sup>3</sup>/h  
20 m/s  
4420 rev/min approx.  
300 mm

4.6 kW, 3-phase

5555 x 1480 mm, 6555 x 1480 mm or 6555 x 1730 mm  
5555 x 1265 mm, 6555 x 1265 mm or 6555 x 1515 mm  
2745, 2895 or 3495 mm  
740 kg approx.  
Saw carriage on pallet  
3000 x 1040 x 1000 mm  
Frame in 6630 x 600 x 1700 mm crate  
930 kg approx.  
2 crates  
2980 x 1140 x 1080 mm  
6740 x 690 x 1780 mm  
1550 kg approx.

### 1220 automatic

2050, 2200 or 2800  
1950, 2100 or 2700  
1950, 2100 or 2700  
4300 or 5300  
70/80 mm  
Tilting 90 deg.  
4.6 kW (S6 – 40%) 6.3 HP  
6 bar  
160 mm dia.  
2000 m<sup>3</sup>/h  
20 m/s  
4420 rev/min approx.  
300 mm  
0.35/0.55 kW  
12/24 m/min  
Feed and/or saw speed  
infinitely variable  
5.2 kW 3-phase

900 kg approx.  
Saw carriage on pallet  
3100 x 1040 x 1200 mm  
Frame in 6630 x 600 x 1700 mm crate  
1100 kg approx.  
2 crates  
2980 x 1140 x 1080 mm  
6740 x 690 x 1780 mm  
1760 kg approx.

Models 1215/1220 automatic are available with or without TRK extractor system (in accordance with latest federal regulations).