

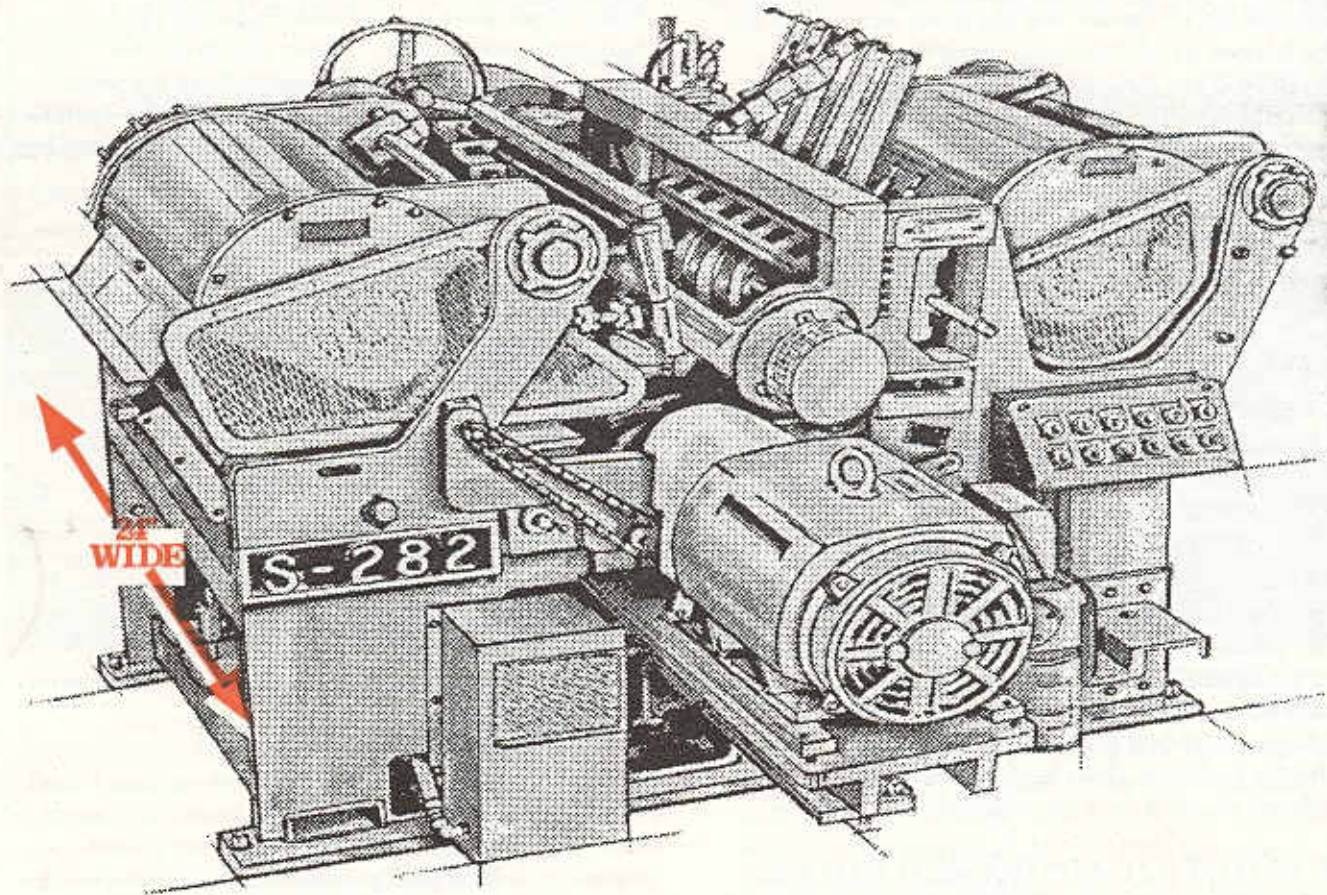
S-282-24"

SERIES NINETY

HYDRAULIC DRIVE DOUBLE PLANER

**NEW
24" MODEL**

- AUTOMATIC CUT CONTROL**
- PNEUMATIC FEED ROLLS**
- VARIABLE FEED SPEEDS UP TO 350 F.P.M.**



NEWMAN  WHITNEY

NEWMAN MACHINE COMPANY, INC.
P.O. BOX 5467 * 507 JACKSON ST.
GREENSBORO, N.C. 27435
PHONE (919) 273-8261 * FAX (919) 273-6939

S-282-24" HYDRAULIC DRIVE DOUBLE PLANER

The Newman S-282-24" Double Planer is the product of over seventy-five years of experience and today's technology.

The S-282-24" is designed specifically for surfacing rough lumber in board lengths. Planing in long lengths allows cut-off saw operators to see defects more easily and make better decisions, resulting in increased yield. The minimization of snipe and other machining defects also contributes to increased yield. Planing in long lengths provides maximum productivity at high feed speeds.

Hydraulically driven pneumatic rolls are the ultimate combination of high torque, positive traction, and gentle non-destructive feeding of sensitive material.

QUIETCUT™ Helical carbide cutterheads provide long life and low maintenance at reduced noise levels.

Our exclusive "Automatic Cut Control" (A.C.C.)™ is the answer to "scant" lumber planing as it eliminates fixed cutting depths on the bottom cutterhead. Combining these features on the S-282-24" guarantees maximum yield at the absolute minimum operating costs.

CUTTERHEAD ASSEMBLIES

Standard cutterheads are six-knife, high speed steel, precision balanced and powered by 50 HP coupled motor for the top head and 40 HP for the bottom head. Newman eight-knife QUIETCUT™ Helical Carbide Cutterheads are optional. The top and bottom cutterheads have deep groove precision ball bearings and are mounted in one-piece yokes to insure precise alignment and rigid support for maximum performance.

Hand scraped precision jointer bars are factory fitted to both cutterhead assemblies.

The bottom head yoke slides out from the left hand side of the planer by rack and pinion drive for ease of knife maintenance.

QUIETCUT CUTTERHEADS (Optional)

This patented cutterhead has continuous-edge spiral carbide knives which provide superior noise reduction of 15 to 25 dBA. The spiral design provides exceptional finish and virtually eliminates tearout, grain damage, and knot loosening. The carbide knife requires substantially less maintenance and provides much greater knife life than high speed steel, which reduces planing cost significantly.

BOTTOM "QUAD" INFEEED ROLLS

Four 4" diameter idle steel bottom infeed rolls provide a flat bed for the lumber to rest upon as it enters the cut. This helps to prevent leading and trailing end snipe as the board enters and leaves the cut. The "Quad" Rolls adjust with the incline table for quick and easy machine setup.

TOP HEAD CHIPBREAKER

The chipbreaker consists of eight 3" wide independently yielding, spring loaded holddown shoes. Each shoe has a hardened, tool steel, replaceable wear plate. These shoes can be independently adjusted to compensate for wear.

Ease of jam clearing is provided by remote control air lifting for raising the entire chipbreaker assembly.

TOP PRESSURE BAR

The heavy ribbed, cast pressure bar is mounted to the top head yoke and is provided with a chrome plated replaceable wear plate. A manual quick release and reset aids in rapid clearing of jams. An optional air operated, remote quick release is available.

HYDRAULIC DRIVE

This drive eliminates gears, sprockets, and chains while providing smooth infinitely variable speed which, combined with the pneumatic rolls, gives the most positive, responsive, and trouble-free feed system available to the industry.

PNEUMATIC FEED ROLLS

Pneumatic tires replace conventional steel rolls. They accommodate simultaneous feeding of stock with thickness variations of over 1" and provide anti-kickback protection. The conforming nature of these rolls eliminates roller split of cupped lumber, while providing unexcelled feeding capability and eliminating the high maintenance required on spring loaded sectional rolls.

S-282-24" HYDRAULIC DRIVE DOUBLE PLANER

SPECIFICATIONS

CUTTERHEADS: 6-knife, high speed steel, 7" cutting circle, 20 degree cutting angle, and knife lifters. Newman 8-knife QUIETCUT™ Helical Carbide Cutterheads are optional.

FEED WORKS: Upper infeed and outfeed rolls are approximately 16" in diameter with 4" independent maximum yield, and "Quad" bottom roll infeed with 4" diameter idle, steel bottom rolls and one 12" diameter outfeed roll.

DRIVE: 20 HP hydraulic power unit for top infeed and outfeed rolls with infinitely variable, remote speed selection. Speed ranges from a minimum of 60 FPM to a maximum of 350 FPM available.

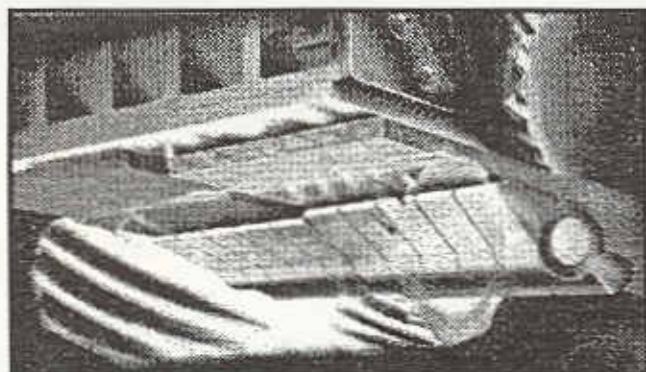
TOP HEAD CHIPBREAKER: 3" sections with independent yield of 1-1/2". Air operated release of top head chipbreaker.

CENTER DISTANCES: First roll to top cutterhead - 21-7/8". Top cutterhead to bottom cutterhead - 6-3/4". Bottom head to outfeed rolls - 21-9/16".

STOCK DIMENSIONS: Maximum thickness 6". Minimum thickness 3/8". Maximum width 24". Shortest stock (not butted) 48".

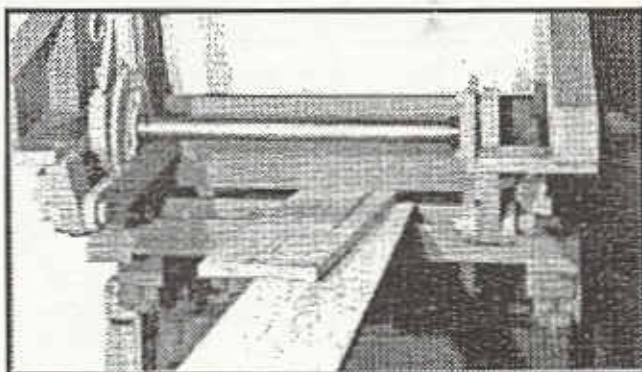
DUST COLLECTION: Top head - 10" diameter. Bottom head - 9" diameter. Consult factory for CFM req.

OPTIONAL EQUIPMENT: * Automatic Cut Control * Newman QUIETCUT™ Helical Carbide Cutterheads * Remote control console to extend planer controls to operator's position * Anti-lap device * Top head power hoist * Air operated pressure bar * 24" x 18' hydraulic driven infeed belt conveyor.



AUTOMATIC CUT CONTROL (OPTIONAL)

The exclusive "Automatic Cut Control"™ (A.C.C.)™ developed by Newman * Whitney eliminates the fixed bottom head cut found on conventional knife planers. Varying bottom head cut provides more equal distribution of hit or miss surfaces on both sides of the lumber which results in increased yield and lumber grade improvement. Yield increases of 5 to 10 percent can be obtained with the A.C.C. and other exclusive features of the S-282-24".



ANTI-LAP DEVICE (OPTIONAL) Available for Conveyor Fed Machines Only

This unique, patented device is essential if the machine is to be conveyor fed. Mounted before the infeed rolls, it prevents overlapped or underlapped boards from entering the planer. It automatically unlaps the boards and feeds them into the planer end to end without stopping or slowing production.

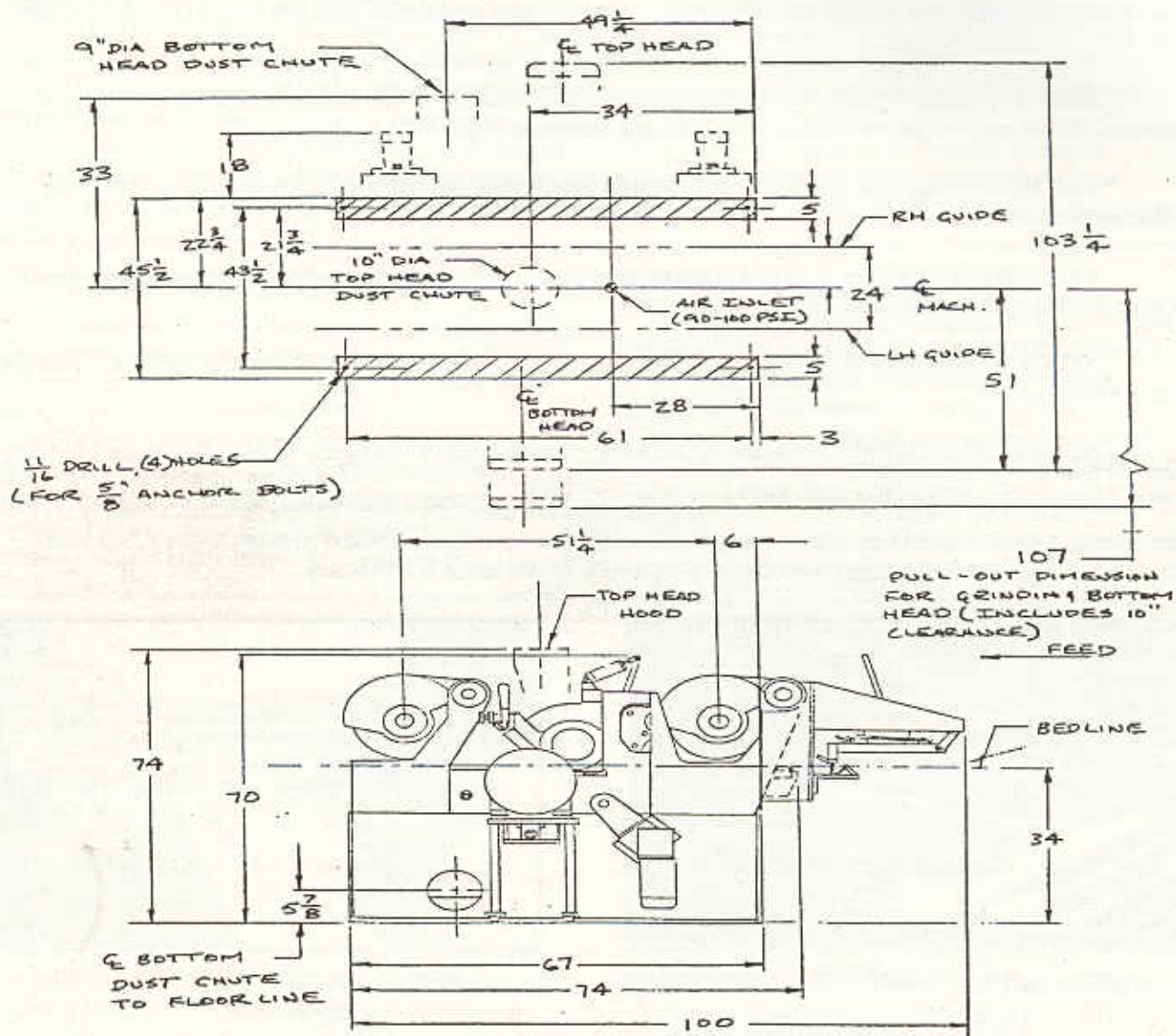
The Anti-Lap device adjusts for thickness with a single lever and, when set, also prevents oversize boards from entering the planer.

Conveyor feeding becomes safer, simpler, and more productive.

NEWMAN  WHITNEY

S-282-24"

HYDRAULIC DRIVE DOUBLE PLANER



S-282
24" MACHINE

NEWMAN WHITNEY

NEWMAN MACHINE COMPANY, INC.

P.O. BOX 5467 * 507 JACKSON ST.

GREENSBORO, N.C. 27435

PHONE (919) 273-8261 * FAX (919) 273-6939